



**Water Services Engineering
(WSE) Pty Ltd**
ABN 48 149 609 049

Water Services Engineering (WSE) has helped many entities over the last 25 years to make their plants safe and fully compliant for as little as \$3,000 per switchboard. Our major client, Queensland Urban Utilities (QUU), was awarded the Arc Flash Safety Compliance Award of 2017 due to significant input by WSE to carry out safety audits, power system analysis and arc flash compliance of their 180 pump stations and 11 large sewage treatment plants, and attaching safety labels on their switchboards irrespective of the size of each switchboard.

WSE, with its competent and fully trained staff, is capable of carrying out safety and compliance audits of any plant – large or small – anywhere in Australia. We also provide Pump Station Switchboards Isolation & Restoration Training to QUU staff and Contractors with a 3 year contract currently in place.

WSE can also help its clients with remedial works required as a result of safety audits and power system analysis to make their switchboards safe.

Get your switchboards checked - you might be surprised with what you find!

Please contact Rahim Janfada on Mobile 0414 313 419 to arrange for a sample check of your switchboards.

Water Services Engineering (WSE) - experts in making plants safe!

Water Services Engineering Electrical Safety Alert

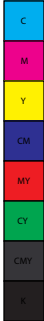
Are your switchboards safe and complying with the requirements of AS3000:2007?

You might find that this is not the case! We have found about 98% of switchboards having been in service for many years are not compliant with the applicable Codes and Safety Standards due to either:

- Not having adequate protection; or
- Their protective device not being properly set to cause automatic disconnection of live circuits during a fault as required by Clause 1.5.5.3 of AS3000.

These non-compliance issues can cause serious electric shocks or even electrocution.

Therefore, it is critical to have your switchboards checked and issued with a safety certificate and Arc Flash Label by qualified personnel to identify the arc flash category and PPE requirements for each of your switchboards.



WARNING

Arc Flash and Shock Hazard

Appropriate PPE Required

359 mm Flash Hazard Boundary
0.80 cal/cm² Flash Hazard at **457 mm**
Level 0 Nonmelting, Flammable Materials with
Weight >= 4.5oz/sq yd
415 VAC Shock Hazard when cover is removed
00 Glove Class
1067 mm Limited Approach
305 mm Restricted Approach
25 mm Prohibited Approach

Site: NEW ESB3 SWBD



Water Services Engineering
269 Wickham St Fortitude Valley
QLD 4006 Mobile 0414 313 419

Rev#:	1	Report Date:	30/04/15	By:	R.J. (RPEQ)
--------------	----------	---------------------	-----------------	------------	--------------------

Warning: Changes to equipment settings or system configuration will invalidate the calculated values and PPE requirements

